

# SVEZA<sup>®</sup> COLOR

FILM FACED  
COLORED BIRCH  
PLYWOOD

READY  
FOR USE



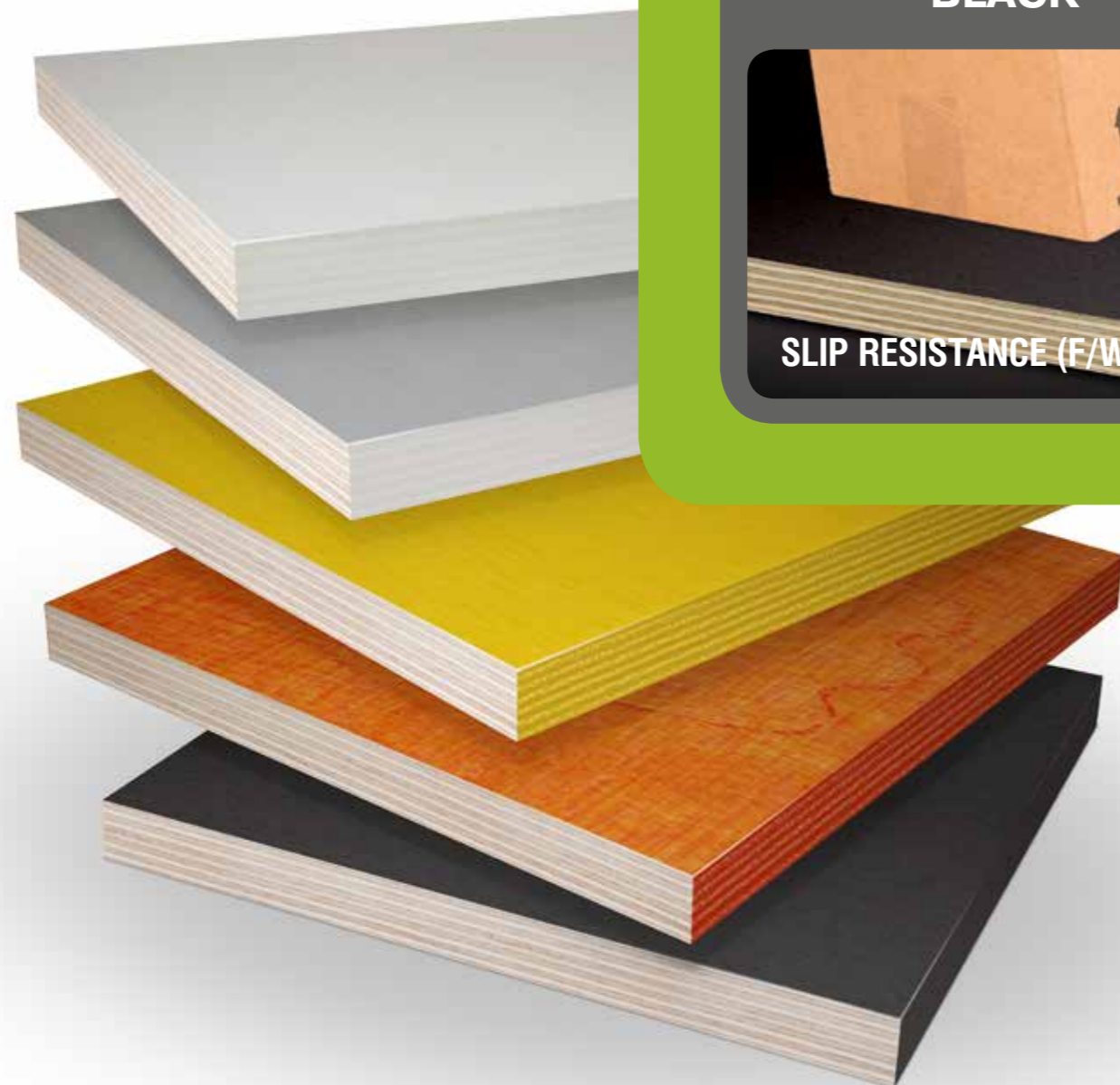
The world leader in birch plywood  
production

[WWW.SVEZA.COM](http://WWW.SVEZA.COM)

# SVEZA<sup>®</sup> COLOR

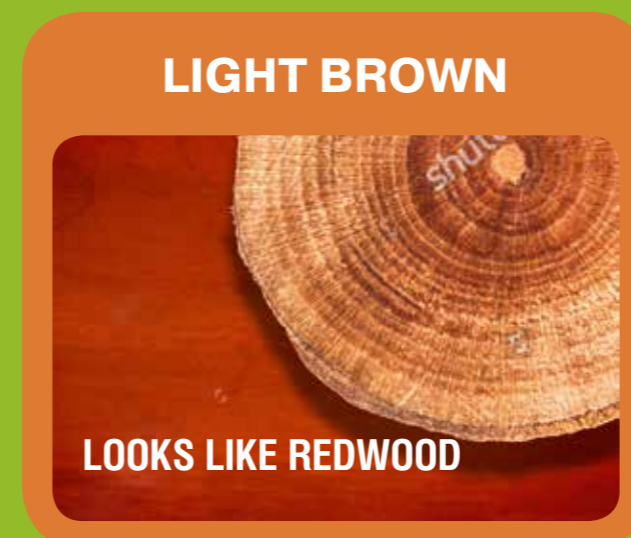
Film faced  
colored birch  
plywood

Available in 2 sizes:  
**4×8 & 5×10**



MIXED ORDER: COMBINE REGULAR AND SVEZA COLOR  
PRODUCTS IN THE QUANTITY YOU NEED

## KEY BENEFITS



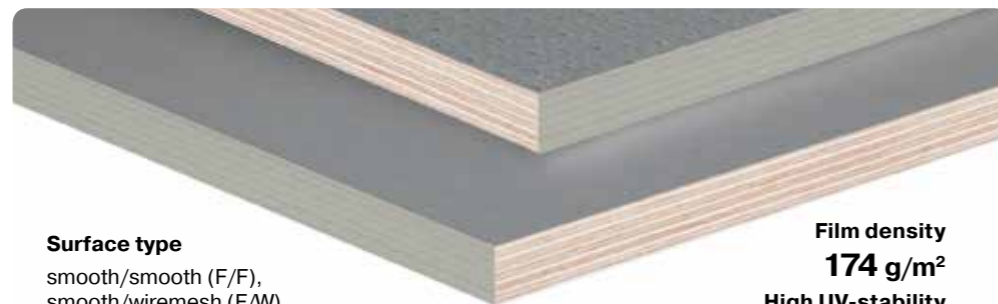
SVEZA COLOR  
**LIGHT  
GREY**



**Surface type**  
smooth/smooth (F/F),  
smooth/wiremesh (F/W)

**Film density**  
**220 g/m<sup>2</sup>**  
**High UV-stability**

SVEZA COLOR  
**STONE  
GREY**



**Surface type**  
smooth/smooth (F/F),  
smooth/wiremesh (F/W)

**Film density**  
**174 g/m<sup>2</sup>**  
**High UV-stability**

- Commercial vehicles (body and flooring in box vehicles)
- Boats (floor boards, transoms, benches)
- Interior panels



SVEZA COLOR  
**LIGHT  
BROWN**



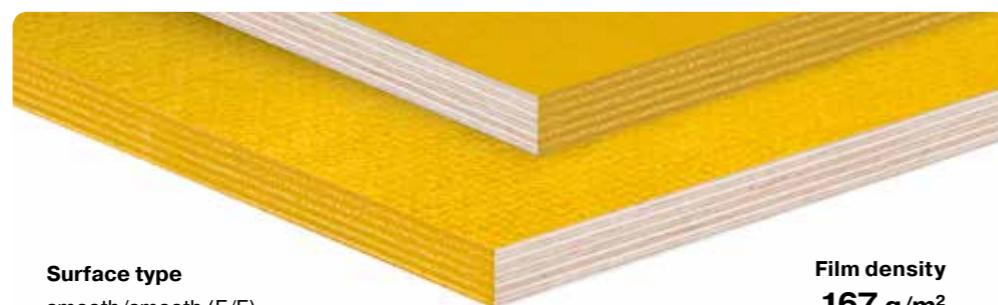
**Surface type**  
smooth/smooth (F/F)

**Film density**  
**117 g/m<sup>2</sup>**

- Interior panels for minivans and camper vans, yachts
- Furniture
- Wall panels for indoor decoration



SVEZA COLOR  
**YELLOW**



**Surface type**  
smooth/smooth (F/F)

**Film density**  
**167 g/m<sup>2</sup>**

- Playgrounds and sports equipment
- Farm houses
- Interior panels



SVEZA COLOR  
**BLACK**



**Surface type**  
smooth/smooth (F/F),  
smooth/wiremesh (F/W)

**Film density**  
**125 g/m<sup>2</sup>**

- Boxes for musical instruments and backdrops
- Horse bands



TECHNICAL SPECIFICATIONS

Formaldehyde emission class	E1
Water resistance	high
Density, kg/m³	640–700
Moisture content, %	≤14
Produced under STO 00255177-002-2014 Film faced birch plywood. For STO visit Library section on <a href="http://www.sveza.com">www.sveza.com</a>	

STRENGTH

Subject	Thickness, mm	Index
Static bending strength, N/mm², not less		
– along the outer layer grain	9–21	60
– across the outer layer grain		30
Strength in tension along the grain, N/mm², not less	6–8	30
Modulus of elasticity in static bending, N/mm², not less		
– along the grain	9–21	6,000
– across the grain		3,000

NUMBER OF SHEETS IN A CRATE

Nominal thickness of plywood, mm	Crate height, mm									
	400					600				
	Number of sheets in a crate, pcs	Volume, m³				Number of sheets in a crate, pcs	Volume, m³			
		1,220 × 2,440 mm	1,250 × 2,500 mm	1,500 × 3,000 mm	1,525 × 3,050 mm		1,220 × 2,440 mm	1,250 × 2,500 mm	1,500 × 3,000 mm	1,525 × 3,050 mm
6	65	1.161	1.219	1.755	1.814	100	1.786	1.875	2.700	2.791
6.5	62	1.200	1.259	1.814	1.874	92	1.780	1.869	2.691	2.781
8	50	1.191	1.250	1.800	1.861	75	1.786	1.875	2.700	2.791
9	44	1.179	1.238	1.782	1.842	67	1.795	1.884	2.714	2.805
10	40	1.190	1.125	1.800	1.861	60	1.786	1.875	2.700	2.791
12	33	1.179	1.238	1.782	1.842	50	1.786	1.875	2.700	2.791
15	26	1.161	1.219	1.755	1.814	40	1.786	1.875	2.700	2.791
18	22	1.179	1.238	1.782	1.842	33	1.768	1.856	2.673	2.763
21	19	1.188	1.247	1.796	1.856	29	1.813	1.903	2.741	2.833

THICKNESS TOLERANCES

Nominal thickness of plywood, mm	Number of plies, pcs	Sanded plywood
		Maximum tolerance, mm
6	5	+0.4; –0.5
6.5	5	+0.4; –0.5
8	6/7	+0.4; –0.5
9	7	+0.4; –0.6
10	7/8	+0.5; –0.6
12	9	+0.5; –0.7
15	11	+0.6; –0.8
18	13	+0.7; –0.9
21	15	+0.0; –1.1

SIZE TOLERANCES

Length or width of plywood sheets, mm	Tolerance, mm
1,220 / 1,250	± 3.0
1,500 / 1,525	± 4.0
2,440 / 2,500	± 4.0
3,000 / 3,050	± 5.0

LOADING CAPACITY STANDARDS

Size, ft	Crate height, mm	Container		Truck		Railcar	
		Number of crates	Volume, m³	Number of crates	Volume, m³	Number of crates	Volume, m³
4 × 8	400	32	37	24	30	64	80
	600	—	—	16	30	—	—
5 × 10	400	19	35	16	30	34	60
	600	—	—	11	30	—	—

Mixed order: combine regular and SVEZA Color products in the quantity you need  
The actual loading capacity standards can differ from the basic standards, depending on the terms agreed upon with the client.

# KEY REASONS FOR OUR SUCCESS

## STABLE BIG VOLUMES OF BIRCH PLYWOOD

- 34 826 containers (40') of birch plywood annually (1288 573 m³ = 34 826 (40'))
- 6 plywood mills located in the regions with high accessibility to raw material
- Main sizes of plywood: 5×5, 4×8, 8×5, 5×10

## HIGH QUALITY PRODUCTS

- 100% birch veneer
- Modern machinery from the world leaders in wood processing
- Regular tests to monitor products performance

## FSC-CERTIFIED PLYWOOD

- SVEZA is committed to responsible use of forest resources, which is confirmed by international FSC certificates

## PERSONAL MANAGER FOR EACH CUSTOMER

- Responsible attitude and well-established communication from manager to the client

## MARKETING CUSTOMER SUPPORT

- Cooperative promotional programs: exhibitions, advertising, conferences, PR

NORWAY

SWEDEN

FINLAND

  
**St. Petersburg**

ESTONIA

LATVIA

LITHUANIA

BELARUS

**Kostroma**  
**Moscow**

**Manturovo**

**Veliky Ustyug**

UKRAINE

RUSSIA

**Perm**

**Ekaterinburg**

Ural

Siberia

KAZAKHSTAN



DIN 68705-3 –  
BFU 100 – MPA HB



EN 13986  
FPC is certified  
by Notified Body 1075 –  
MPA Bremen



The mark  
of responsible forestry

**CARB**

ATCM 93120

[www.sveza.com](http://www.sveza.com)

© SVEZA 09/2017